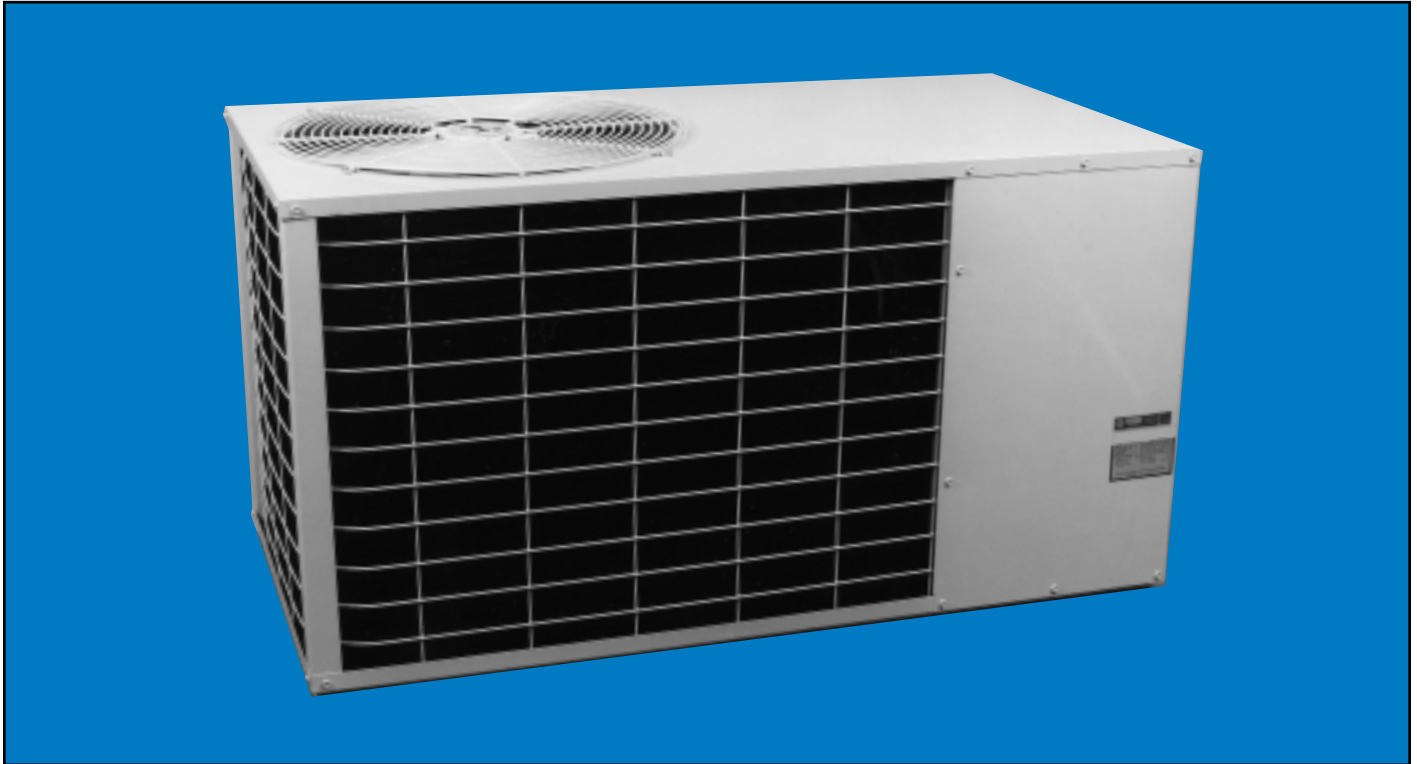




2 to 5 Tons

PACKAGED COOLING UNITS FOR RESIDENTIAL,
LIGHT COMMERCIAL AND MOBILE HOME AIR CONDITIONING

PC SERIES



Electric Cooling and Heating

The PC Series air conditioning system can provide cooling to an entire home, building or mobile home by connecting to the existing duct work in the home. All operating controls are conveniently located in a wall thermostat.

Packaged air conditioning systems are positioned outside the home on a concrete slab or patio blocks, isolating all operating noises away from living areas. Cooled air is circulated throughout the home in the existing duct work giving even temperatures in all rooms.

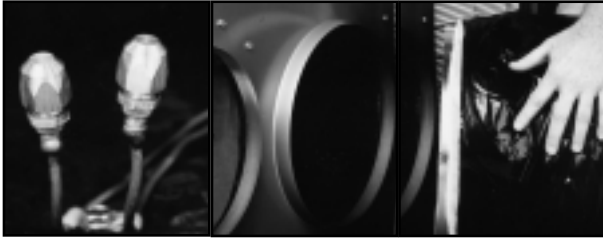
The cabinets are low to the ground, only 25³/₄" except 5 ton 27³/₄" in height. They are made of 20 gauge G-90 galvanized steel, primed and enamel finished for long rust-free life.

PC Series units and heaters are electrically approved, and rated in accordance with D.O.E. and A.R.I. performance standards. The blower and

motor assembly is dynamically and statically balanced for maximum quiet air flow. The blower is direct-driven by a high efficiency multi-speed motor which is permanently lubricated for reliable operation.

The compressors are designed to give dependable performance under severe operating conditions. Built-in controlled crankcase heater (3-1/2 ton & larger) in addition to thermal and electrical overload protective devices prevent costly compressor damage. Resilient mounts and extra bracing under the compressor compartment prevent sound and vibration from being carried into the building. All refrigerant coils are constructed of seamless copper tube and aluminum fin. Every packaged unit model includes a built-in supply damper to prevent air backdrafting if more than one air circulator is used on a common duct system.

PC DESIGN FEATURES

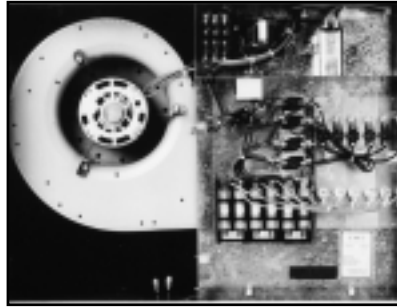


CHARGING PORTS

Are easily accessible as pointed out on the package units. The complete refrigerant circuit is precharged.

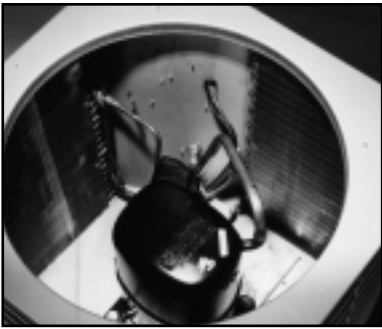
DUCT CONNECTIONS

Ducts are easy to install on existing cabinet flanges. No special adapter collars required to connect standard ducts to packaged system.



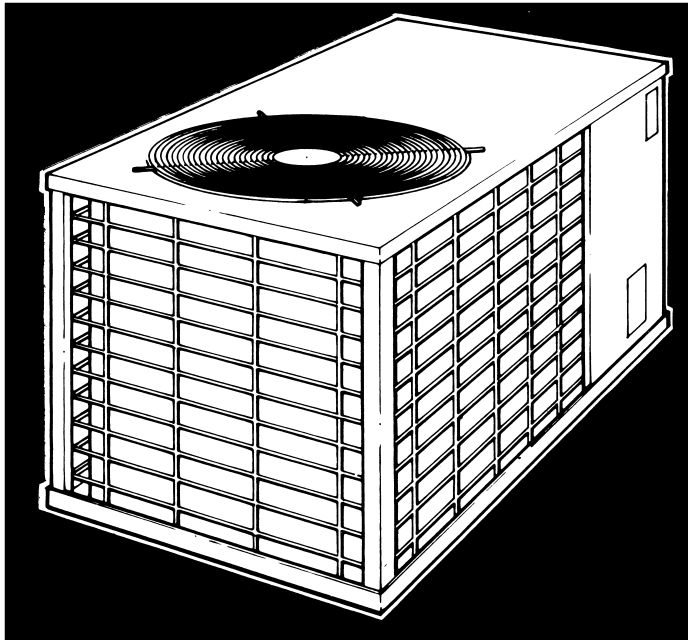
ACCESS

Packaged system features exceptionally easy service access to all electrical components. Electric heat strip is shown installed. Charging ports also shown.



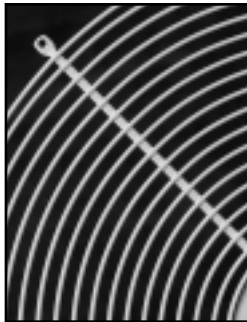
COMPRESSOR

Heavy duty heat pump compressors give dependable performance under the most severe operating conditions. Compressors on larger models have a solid-state self-limiting crankcase heater to eliminate spring start-up problems. Protective overload devices prevent costly compressor damage. Resilient mounts and extra bracing under the compressor give quiet, vibration-free operation.



COOLING COILS

All refrigerant coils are made of the finest quality seamless copper tubing and aluminum fins. Every unit is individually tested and run twice before leaving the factory to help assure trouble free performance after installation.



RUST PROTECTION

Fan and coil grills are plastic coated to prevent rust. Heavy 20 gauge G-90 galvanized steel is used in construction. Cabinets are chemically degreased, primed and finished in metallic beige rust preventive paint.

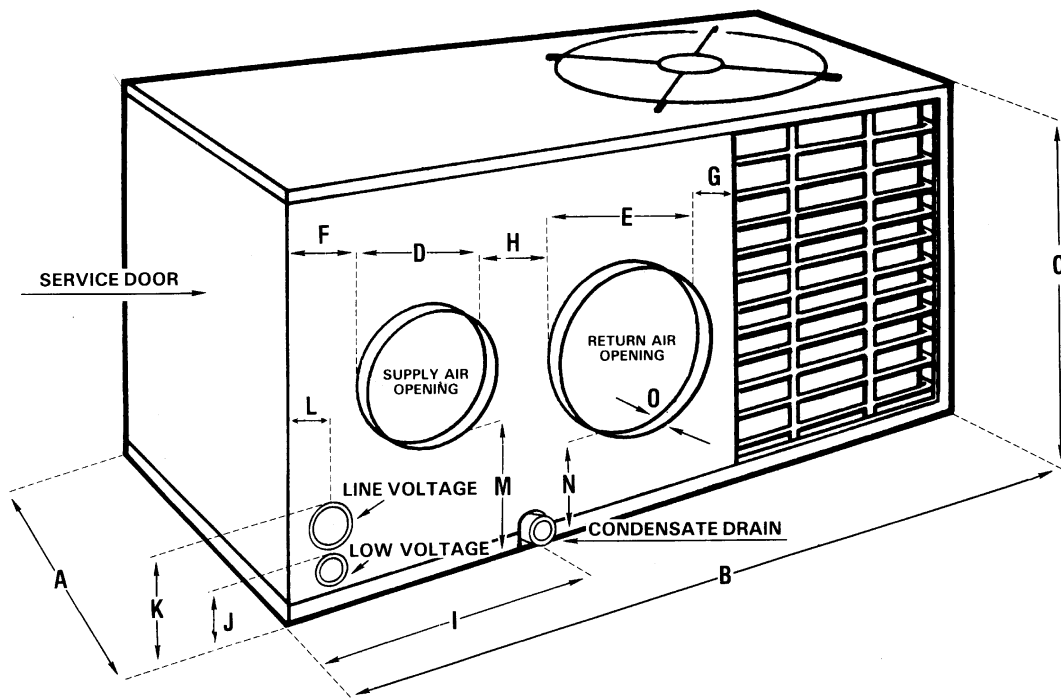


COMPRESSOR ACCESS

Condenser fan and motor remove with the top grille providing direct access to the compressor. Large, precision balanced fan blades deliver constant air flow while operating at energy efficient lower speeds. Fan motor is permanently lubricated and never needs oiling.

PC PACKAGED UNIT DIMENSIONS (INCHES)

Model	A	B	C	D	E	F	G	H	I	J	K	L	M	N	O
PC24-1K PC30-1K PC36-1K PC42-1K	25-1/4	48-1/4	25-3/4	10	12	3-1/4	2	2-1/2	14-1/2	2-1/8	4	1-7/8	8-1/2	6-1/4	1
PC48-1K PC60-1Z PC60-3Z	30-1/4	58-1/4	25-3/4 27-3/4	12	14	2-1/8	2-1/4	4-3/4	17-1/2	2-1/8	4	1-7/8	6-1/4	4-1/8	1



AIR PERFORMANCE CHART

Unit Model	CFM/EXTERNAL DUCT STATIC (Inches H ₂ O)				HIGH SPEED/LOW SPEED				
	.2	.3	.4	.5	.6	.7	.8	.9	
PC24 & PC30	1240/NA	1210/1010	1160/940	1110/908	1065/855	930/785	830/720	720/685	
PC36	1435/1275	1400/1250	1340/1215	1275/1160	1205/1100	975/960	860/850	750/740	
PC42	1700/1620	1630/1540	1565/1490	1500/1405	1400/1350	1320/1230	1190/1120	1050/985	
PC48 & PC60	2150/1940	2080/1910	2035/1835	1920/1755	1815/1705	1710/1585	1585/1435	1460/1350	

Above performance is with dry coil. Deduct approximately .1" from available static pressure for wet coil performance.

Tested in accordance with:



PC PACKAGED UNIT SPECIFICATIONS

Model	PC24-1K	PC30-1K	PC36-1K	PC42-1K	PC48-1K	PC60-1Z	PC60-3Z
Capacity ^①	22,000	28,600	34,000	40,000	46,000	57,000	57,000
SEER	9.70	9.70	9.80	10.00	10.20	10.20	10.20
Sound Rating ^②	8.0	8.0	8.2	8.2	8.4	8.4	8.4
Voltage	230/1/60Hz	230/1/60Hz	230/1/60Hz	230/1/60Hz	230/1/60Hz	230/1/60Hz	230/3/60Hz
Cond. Fan Motor							
HP/FLA	1/5/1.5	1/5-1.5	1/5-1.5	1/5-1.5	1/4-2.2	1/4-2.2	1/4-2.2
RPM	1075	1075	1075	1075	1075/900	1075/900	1075/900
CFM	3000	3000	3000	3000	3380	3380	3380
Evap. Fan Motor							
HP/FLA	1/4-2.2	1/4-2.2	1/3-2.5	3/4-4.0	3/4-4.0	3/4-4.0	3/4-4.0
RPM	1075/900	1075/900	1075/900	1100/1000	1100/1000	1100/1000	1100/1000
CFM/ESP	825/6	1050/6	1275/5	1400/6	1700/7	1875/5	1875/5
Electrical							
Max. Fuse ^③	20	30	35	40	50	60	35
Min. AWG ^④	12	12	12	10	10	8	10
System LRA	62	83	87	104.5	131	180	135
System Run Amps ^⑤	11.4	15.1	17.4	21.5	28.9	29.5	20.0
Max. Heater ^⑥	20	20	20	20	30	30	30
Shipping Weight	237	244	255	270	326	348	351

① Rated in accordance with ARI 210-84. Three-phase models are EER.

② Rated in accordance with ARI 270.

③ Time delay type or HVAC Circuit Breaker.

④ The wire sizes are for type TW copper conductors under 50 feet in length. If combination heating and cooling unit is required, adjustments may be required.

Refer to the Optional Heat Chart below.

⑤ Total system running amps at 104° F OD temp., 80° F DB / 67° F WB indoor temp.

⑥ Maximum kilowatts of electric heat approved for each model.

ACCESSORIES ELECTRIC HEAT

Model	7603-545	7603-546	7603-547	7603-548	7603-549	7603-550	7603-551	7603-552	7603-553
BTU Output	17,050	25,575	34,100	51,150	68,200	38,360	51,150	76,725	102,300
KW at 240 Volts	5	7.5	10	15	20	11.25	15	22.5	30
Min. CFM*	600	700	825	825	825	825	825	1000	1450
Volts/Phase/Hertz			240/1/60				240/3/60		
Heat Load Amps	20.8	31.3	41.6	62.4	83.2	27.1	36	55	73
Min. Wire Gauge**	10	8	6	3	1	8	6	3	1
Max. Fuse Size	30	40	60	80	110	35	50	70	100
Net Wt. Lbs.	12	15	15	18	20	16	16	20	30

*Minimum air flow for safe operation.

** Type TW copper conductor under 50 feet in length.

ELECTRIC HEATER PRESSURE DROP (IN WC)***

Model	7603-545	7603-546	7603-547	7603-548	7603-549	7603-550	7603-551	7603-552	7603-553
Loss at 825 CFM	.08	.11	.11	.17	.20	.17	.17	NA	NA
Loss at 1050 CFM	.11	.15	.15	.20	.23	.20	.20	NA	NA
Loss at 1275 CFM	.14	.21	.21	.24	.29	.24	.24	NA	NA
Loss at 1400 CFM	.19	.24	.24	.32	.38	.32	.32	NA	NA
Loss at 1450 CFM	NA	.08	.08	.11	.14	.11	.11	.11	.23
Loss at 1675 CFM	NA	.08	.08	.13	.19	.13	.13	.13	.39
Loss of 1875 CFM	NA	.10	.10	.14	.10	.14	.14	.14	.40

***825-1400 CFM refer to models in small cabinet. 1450-1875 CFM refer to models in large cabinet.

When heater is used, deduct pressure drop from available static pressure.

THERMOSTATS

7600-343 Cooling only
7600-345K Cooling
Heating - Deluxe

RELAY

7603-538 Fan relay (1)

DUCT KITS

7603-554: 1-12" x 20" R/A Box
1-10" Collar

7603-555: 1-48" x 12" Duct
1-108" x 10" Duct

7603-556: 1-12" x 24" R/A Box
1-12" Collar

7603-557: 1-48 x 14" Duct
1-108" x 12" Duct

7603-558: 1-12" x 10" x 10" Wye
1-48" x 10" Duct

7603-559: 1-108" x 10" Duct
1-14" x 14" x 14" Wye

1-48" x 10" Duct
1-108" x 14" Duct

(1) Required for continuous fan operation on 2 thru 4 ton cooling only units. 5 ton has relay installed. When electric heat kits 7603-545 thru 7603-553 are installed, they have the fan relay in them and 7603-538 would not be required.

Static pressure will allow these units to be used in mobile home installations and as packaged cooling units.

Specifications and performance data subject to change without notice.

HEAT CONTROLLER, INC.

1900 WELLWORTH AVENUE • JACKSON, MICHIGAN 49203

THE QUALITY LEADER IN CONDITIONING AIR