

Comfort-Cire®

13 SEER HEAT PUMPS FOR R-410A



HRG13
SERIES
1.5 to 5 Tons



- **Long life copper coils** with enhanced aluminum fins provide maximum heat exchange for greatest efficiency
- **Louvered metal jacket** protects the coil while adding to the attractive appearance
- **Expansion valve** with internal check valve adds reliability
- **Demand Defrost** improves efficiency by defrosting only when necessary
- **Non-cycling reverse valve** minimizes operational noise
- **Muffler** on compressor discharge dampens compressor sound
- **Heat pump duty compressors** are designed for long life and efficiency
- **Heavy duty grille** and motor mount contribute to quiet fan operation
- **Three service ports**—liquid, vapor and common—are easily accessed
- **Waterproof control box** is conveniently located for installation and service
- **Durable cabinet** is painted to stand up to tough weather conditions and maintain an attractive appearance
- Units are certified and rated under ARI Standard 210/240 for Unitary Heat Pumps

Outstanding Warranty Coverage—12 years compressor, 6 years other parts!



HEAT CONTROLLER, INC.

PERFORMANCE DATA-ARI STANDARD CONDITIONS

Model Numbers		ARI Cooling Performance						ARI Heating Performance (70° F Indoor)				
		80°F DB/67°F WB Indoor—95°F DB Outdoor						Outdoor Air 47°F DB/43°F WB DOE High Temp.		Outdoor Air 17°F DB/15°F WB DOE High Temp.		DOE Region IV HSPF
Outdoor Unit	Air Handler*	Total Capacity BTUH	Net Sens. BTUH	Net Latent BTUH	EER	SEER	Indoor CFM	BTUH	COP	BTUH	COP	
HRG1318-1A	HFE1817EP1A	18,000	13,100	4900	11.90	13.00	600	15,900	3.46	8500	2.26	8.20
HRG1324-1A	HFE2417EP1A	23,800	17,300	6500	12.00	13.00	800	20,800	3.40	11,000	2.06	7.70
HRG1330-1A	HFE3017EP1A	28,600	21,200	7400	11.70	13.00	1000	27,600	3.60	15,700	2.44	7.70
HRG1336-1A	HFE3617EP1A	35,400	25,900	9550	11.55	13.00	1200	36,600	3.50	21,200	2.44	7.70
HRG1342-1A	HFE4221EP1A	41,000	29,700	11,300	11.20	13.00	1400	40,000	3.52	23,800	2.24	7.70
HRG1348-1A	HFE4821EX1A	47,500	35,100	12,900	11.50	13.00	1525	44,500	3.56	28,000	2.50	7.70
HRG1360-1A	HFE6024EX1A	58,000	42,300	16,200	11.75	13.00	1825	55,000	3.76	31,000	2.60	7.70

NOTE: Only these combinations of indoor and outdoor units are approved and any other combinations should not be used.

*HFE Series air handler specifications are shown in form HCI-HFE-A.

LINE SIZES and COMPRESSOR

Model	Connection Size (Inch ODS Female)		Standard Line Size (Inch OD)		Compressor Type
	Liquid	Suction	Liquid	Suction	
HRG1318-1A	3/8	3/4	3/8	3/4	Scroll
HRG1324-1A	3/8	3/4	3/8	3/4	Scroll
HRG1330-1A	3/8	3/4	3/8	3/4	Scroll
HRG1336-1A	3/8	7/8	3/8	7/8	Scroll
HRG1342-1A	3/8	7/8	3/8	7/8	Scroll
HRG1348-1A	3/8	7/8	3/8	1-1/8	Scroll
HRG1360-1A	3/8	7/8	3/8	1-1/8	Scroll

NOTE: Unit comes charged for 15' line set.

MODEL IDENTIFICATION

HR	G	13	18	—	1	A
Heat Pump Series	R-410A	SEER	Nominal Cooling Capacity x 1000		Power 1 = 208/230V-1-60	Revision Level

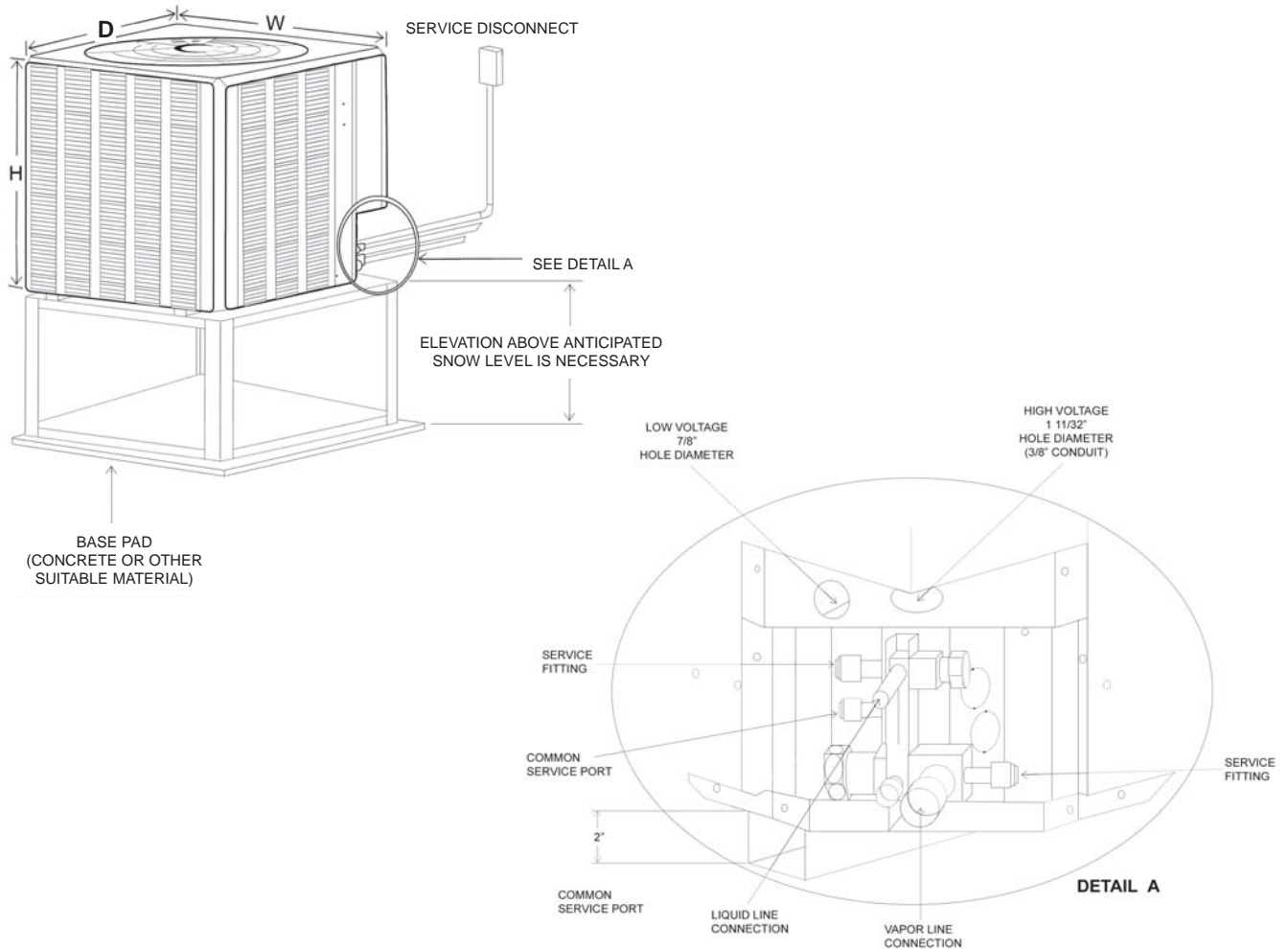
ELECTRICAL AND PHYSICAL DATA

Model	Power Supply 60 Hz	Compressor		Fan Motor Full Load Amps (FLA)	Min. Circuit Ampacity	Max. Fuse or HACR Circuit Breaker	Outdoor Coil			R-410A Oz.	Weight	
		Rated Load Amps (RLA)	Locked Rotor Amps (LRA)				Face Area Sq. Ft.	No. Rows	CFM		Net Lbs.	Ship Lbs.
HRG1318-1A	208/230V-1	9.0/9.0	41	0.6	12	20	11.06	1	1700	81	142	150
HRG1324-1A	208/230V-1	14.1/14.1	54	0.8	19	30	13.72	1	2370	99	180	190
HRG1330-1A	208/230V-1	14.6/14.6	67	0.8	20	30	16.39	1	2800	115	210	222
HRG1336-1A	208/230V-1	18.0/18.0	83	1.2	24	40	21.85	1	3575	134	224	236
HRG1342-1A	208/230V-1	19.2/19.2	105	1.2	26	40	21.85	1	3575	150	214	226
HRG1348-1A	208/230V-1	26.1/26.1	137	1.2	34	50	21.85	1	3575	154	220	232
HRG1360-1A	208/230V-1	25.3/25.3	150	1.2	33	50	21.85	2	3365	256	283	295

NOTE: Factory charged for 15' line set.

UNIT DIMENSIONS

Model Number	Height "H" (inches)	Depth "D" (inches)	Width "W" (inches)
HRG1318	26-1/4	23-5/8	23-5/8
HRG1324	26-1/4	27-5/8	27-5/8
HRG1330	27-3/8	31-5/8	31-5/8
HRG1336/1342/1348/1360	35-5/8	31-5/8	31-5/8



Design, specifications, performance data and materials subject to change without notice.

Some limitations apply to warranty;
see printed warranty or call factory for details.

HEAT CONTROLLER, INC.

1900 Wellworth Ave., Jackson, Michigan 49203 • Ph. 517-787-2100 • Fax 517-787-9341

www.heatcontroller.com

THE QUALITY LEADER IN CONDITIONING AIR