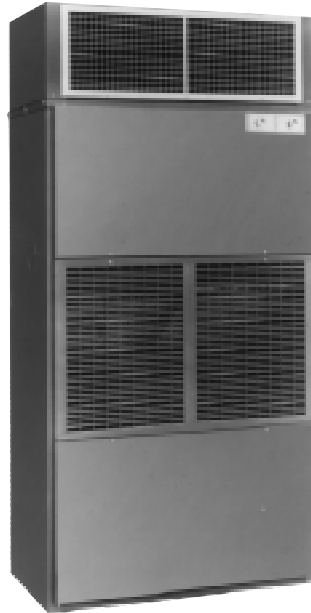
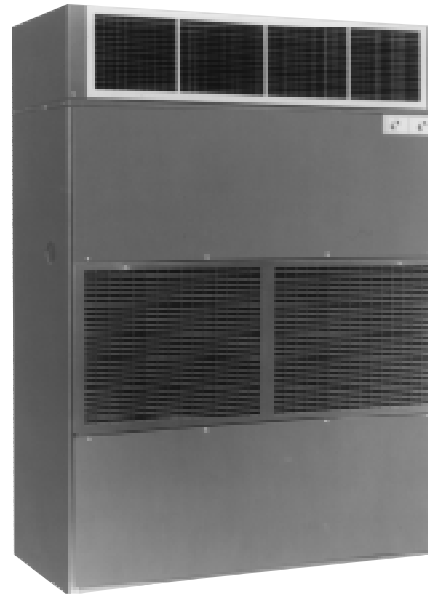


### High Efficiency Water-Cooled Units



Models  
SW36/SW60  
with Optional  
Discharge Plenum



Models  
SW90/SW120  
with Optional  
Discharge Plenum



### Application

SW Series F packaged water-cooled air conditioners are distinctively designed to be installed in either the occupied or unoccupied conditioned space. The supply air can be ducted or used for free-blow installations when the accessory plenum with grille is installed.

### Standard Sizes

Model	BTUH Capacity		CFM	Watts	EER
	Total	Sensible			
SW36	38,600	28,800	1,200	3,540	10.9
SW60	63,500	46,500	2,000	6,010	10.6
SW90	95,000	71,000	3,000	8,980	10.6
SW120	128,000	94,000	4,000	12,100	10.6

Performance Per ARI Standard 210/240-89.

### Standard Design Features

**Heavy Duty Cabinet.** All models are constructed of G-90 Galvanized steel with bolted construction. Bases are minimum 16 gauge and side panels a minimum 18 gauge. All panels include 1/2" fiberglass insulation.

**Electrodeposition Acrylic Paint Finish.** All exterior cabinet parts are cleaned and zinc-phosphate coated in a seven stage pretreatment system, then painted neutra-green in a cationic electrodeposition paint system; the parts are then baked for a minimum of twenty minutes at 420°F to give them the most durable paint finish with a minimum of 1 mil film thickness.

**Compressor.** Each hermetic compressor is internally spring isolated and rests on external rubber isolators. Compressor motors are equipped with thermal protection for motor overload, locked rotor and excessive winding temperatures. Contactor and safety switches are located in an isolated electrical panel in the compressor-condenser compartment.

**Evaporator Coil.** The coil has raised lance aluminum fins formed on multiple rows of seamless copper tubing arranged in a staggered tube configuration. The tubes are mechanically expanded, firmly bonding the tube to the shoulder of each fin.

**Coaxial Counterflow Water-Cooled Condenser.** Consists of an enhanced surface inner copper tube with outer steel tube shell (tube-in-tube). The inner tube serves as the cooling water circuit and the annular space with fluting acts as the refrigerant condensing circuit.

**Refrigerant Circuit.** Each unit has a thermostatic expansion valve standard on all models. Each unit is pressure tested, evacuated, fully charged with R-22, leak tested and operated under normal operating conditions before shipment. The SW90 and SW120 have a separate refrigerant circuit for each compressor which allows 50% capacity and power reduction at light loads.

## Standard Features Continued

**24 Volt Transformer.** Standard on all models.

**Low Voltage Terminal Board.** Provides convenient means to bypass unit mounted controls and connect 24 volt wall mounted thermostat.

**Centrifugal Blower Wheel.** Double-width, double-inlet, forward curved and is sized for high capacity operation against duct static pressure. The wheel is statically and dynamically balanced. Blower motor is resiliently mounted on an adjustable base. Heavy duty V-belt drive and adjustable motor pulley complete the air system.

**Electric Controls.** Readily accessible controls on the unit front include a master selector switch (Fan-Off-Cool) and a separate adjustable return air thermostat. SW90 and SW120 have a two stage thermostat for automatic control of both circuits.

**Filters.** Two inch thick disposable filters are factory installed. Two are required per unit.

**Serviceability.** Patch plates for condenser water and knock-outs for electrical and condensate are on the sides of the cabinet. Easily removed panels provide fast access to filters, compressor controls and all components.

## Options and Accessories

**Discharge Plenum.** Has the same construction and finish as the basic unit, is fully insulated and includes an aluminum grille. Air deflection is provided by adjustable, full-width horizontal louvers with vertical louvers mounted behind.

**Electric Heat.** Field installed and requires separate power. Contact factory for more information.

**Water Regulating Valve.** To maintain proper compressor discharge pressure, a 3/4" water regulating valve is offered for each refrigerant circuit.

**Hard Start Kit.** For the single phase SW36 and SW60, an optional kit (part # 07601N-0180A) is offered.

**Water Coil.** For hydronic heating, a two row water coil with air vents may be factory installed downstream of the evaporator coil.

**Non-Freeze Steam Coil.** A two row steam coil is offered where heating is required.

**Remote Air Cooled.** Contact factory for information.

**Remote 24 Volt Thermostat.** Field installed.

**5 Minute Anti-Short Cycle Timer.** Suggested for use with low voltage remote thermostat – field installed.

## Specifications

Model	Compressor		Evaporator Coil			DWDI Blower Size	Condenser Water Connections			Disposable Filters		Oper.	Ship
	Nom. Tons Each	No	Face Area Sq.Ft.	Fins Per Inch	Rows Deep		Size	No.		Size	No.		
								H <sub>2</sub> O In	H <sub>2</sub> O Out				
SW36	3	1	3.5	10	3	10x10	3/4" FPT	1	1	18x20x2	2	385	430
SW60	5	1	4.7	10	3	12x12	3/4" FPT	1	1	18x20x2	2	435	480
SW90	4	2	7	11	3	12x12	3/4" FPT	2	2	20x24x2 24x24x2	1 1		
SW120	5	2	9.7	11	3	15x15	3/4" FPT	2	2	18x24x2 24x24x2	2 1		

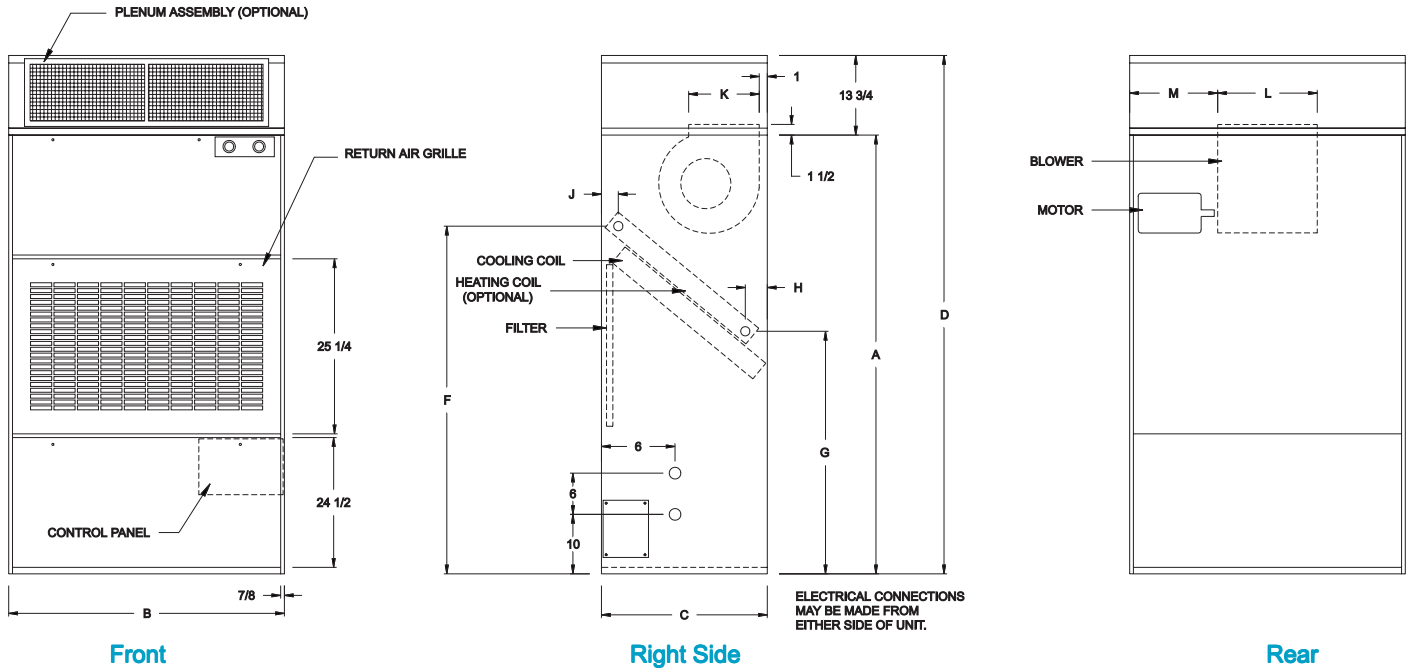
## Blower Performance

Model	CFM	External Static Pressure – Inches H <sub>2</sub> O													
		0.1		0.2		0.3		0.4		0.5		0.6		0.7	
		RPM	BHP	RPM	BHP	RPM	BHP	RPM	BHP	RPM	BHP	RPM	BHP	RPM	BHP
SW36	1,000	580	0.2	640	0.2	700	0.2	750	0.3	810	0.3	860	0.3	910	0.3
	1,200	670	0.2	730	0.3	790	0.3	840	0.3	890	0.3	940	0.4	990	0.4
	1,400	760	0.3	820	0.3	880	0.4	930	0.4	980	0.4	1,030	0.5	1,080	0.5
SW60	1,600	540	0.2	600	0.3	650	0.3	700	0.4	750	0.4	800	0.5	840	0.5
	2,000	650	0.4	700	0.5	740	0.5	780	0.6	820	0.6	860	0.7	900	0.7
	2,400	760	0.7	800	0.7	830	0.7	860	0.8	890	0.8	930	0.9	970	0.9
SW90	2,500	610	0.5	660	0.6	710	0.7	760	0.8	820	0.8	870	0.9	930	0.9
	3,000	730	0.8	770	0.9	820	0.9	860	1.0	920	1.1	970	1.2	1,020	1.3
	3,500	840	1.3	880	1.4	930	1.5	970	1.6	1,020	1.7	1,060	1.8	1,100	1.9
SW120	3,200	500	0.6	530	0.7	560	0.7	590	0.8	620	0.8	660	0.9	690	0.9
	4,000	580	1.0	610	1.1	640	1.1	670	1.2	690	1.3	720	1.4	750	1.4
	4,800	660	1.4	690	1.5	710	1.6	740	1.7	760	1.8	790	1.9	810	2.0

Unshaded areas - "S" Model delivers this performance.  
Light Green shaded areas - "M" Model required for this performance.

Gray shaded areas - "L" Model required for this performance.  
Dark Green shaded area - Contact Factory for special unit with 2 HP motor.

# Dimensions



Model	A	B	C	D	E	F	G	H	J	K	L	M	N
SW36	72	42	23	85 3/4	34	49 5/8	42 7/8	2 1/4	8 1/16	11 3/8	13 1/8	15 1/8	10
SW60	72	42	23	85 3/4	34	51 3/4	42 7/8	2 1/4	4 1/2	13 7/16	15 5/8	15 1/8	10
SW90	74	50	29	87 3/4	42	51 1/8	39 5/8	2 1/4	5 15/16	13 7/16	16 1/8	18 1/2	10
SW120	74	66	29	87 3/4	58	51 1/8	39 5/8	2 1/4	5 15/16	15 7/8	18 3/4	23 5/8	12

# Unit Electrical Data

Model	Volts/Phase 60 Hz.	Blower Motor				Compressor(s)			Unit MCA	Max. Fuse Size
		H.P.	Elec. Char.	RPM	Amps	No.	RLA	LRA		
SW36S-1F	208/230-1	1/3	208/230-1	1,725	3.1	1	17.7	87	26	40
SW36S-3F	208/230-3	1/3	208/230-1	1,725	3.1	1	11.6	70	18	25
SW36M-1F	208/230-1	1/2	208/230-1	1,725	4.4	1	17.7	87	27	40
SW36M-3F	208/230-3	1/2	208/230-1	1,725	4.4	1	11.6	70	19	30
SW36M-4F	460-3	1/2	460-3	1,725	1.0	1	5.4	35	8	15
SW60S-1F	208/230-1	1/2	208/230-1	1,725	4.4	1	30.2	178	43	70
SW60S-3F	208/230-3	1/2	208/230-1	1,725	4.4	1	20.6	124	31	50
SW60S-4F	460-3	1/2	460-3	1,725	1.0	1	10.3	62	14	20
SW60S-5F	575-3	1/2	575-3	1,725	1.0	1	8.4	50	12	15
SW60M-1F	208/230-1	3/4	208/230-1	1,725	5.4	1	30.2	178	44	70
SW60M-3F	208/230-3	3/4	208/230-1	1,725	5.4	1	20.6	124	32	50
SW60M-4F	460-3	3/4	460-3	1,725	1.4	1	10.3	62	15	20
SW60M-5F	575-3	3/4	575-3	1,725	1.2	1	8.4	50	12	20
SW60L-1F	208/230-1	1	208/230-1	1,725	6.4	1	30.2	178	45	70
SW60L-3F	208/230-3	1	208/230-1	1,725	6.4	1	20.6	124	33	50
SW60L-4F	460-3	1	460-3	1,725	1.8	1	10.3	62	15	20
SW60L-5F	575-3	1	575-3	1,725	1.4	1	8.4	50	12	20
SW90S-3F	208/230-3	3/4	208/230-1	1,725	5.4	2	15.4/15.4	90/90	41	50
SW90S-4F	460-3	3/4	460-3	1,725	1.4	2	8.4/8.4	45/45	21	25
SW90S-5F	575-3	3/4	575-3	1,725	1.2	2	6.5/6.5	36/36	16	20
SW90M-3F	208/230-3	1	208/230-1	1,725	6.4	2	15.4/15.4	90/90	42	50
SW90M-4F	460-3	1	460-3	1,725	1.8	2	8.4/8.4	45/45	21	25
SW90M-5F	575-3	1	575-3	1,725	1.4	2	6.5/6.5	36/36	17	20
SW90L-3F	208/230-3	1 1/2	208/230-3	1,725	4.6	2	15.4/15.4	90/90	43	50
SW90L-4F	460-3	1 1/2	460-3	1,725	2.3	2	8.4/8.4	45/45	22	25
SW90L-5F	575-3	1 1/2	575-3	1,725	1.8	2	6.5/6.5	36/36	17	20
SW120S-3F	208/230-3	1 1/2	208/230-3	1,725	4.6	2	20.6/20.6	124/124	51	70
SW120S-4F	460-3	1 1/2	460-3	1,725	2.3	2	10.3/10.3	62/62	26	35
SW120S-5F	575-3	1 1/2	575-3	1,725	1.8	2	8.4/8.4	50/50	21	25
SW120M-3F	208/230-3	2	208/230-3	1,725	6.2	2	20.6/20.6	124/124	53	70
SW120M-4F	460-3	2	460-3	1,725	3.1	2	10.3/10.3	62/62	27	35
SW120M-5F	575-3	2	575-3	1,725	2.5	2	8.4/8.4	50/50	22	25

**RLA** - Rated Load Amps, Compressor/Compressors

**LRA** - Locked Rotor Amps, Compressor/Compressors

**MCA** - Minimum Circuit Ampacity

**Max. Fuse Size** - Maximum Time Delay Fuse or HACR Brkr

# Cooling Ratings SW36

Ent. Water Temp. °F	GPM	CFM	Capacity	Entering Air Dry Bulb Temperature								
				75°F Entering Air Wet Bulb Temp.			80°F Entering Air Wet Bulb Temp.			85°F Entering Air Wet Bulb Temp.		
				63°F	67°F	71°F	63°F	67°F	71°F	63°F	67°F	71°F
65	4	1,000	Total	37,500	40,200	42,900	37,900	40,300	43,100	38,700	40,700	43,200
			Sensible	27,500	23,200	18,800	32,900	28,400	24,000	38,200	33,800	29,300
			Watts	2,770	2,870	2,990	2,790	2,880	2,990	2,850	2,900	3,000
		Lv. Db/Wb	50.0/49.8	53.9/53.9	57.9/57.9	50.1/49.7	54.2/54.0	58.2/58.2	50.3/49.3	54.3/53.9	58.4/58.4	
		1,200	Total	38,700	41,400	44,100	39,300	41,500	44,300	41,200	42,000	44,400
			Sensible	30,000	24,800	19,600	36,400	31,000	25,800	41,200	37,300	32,000
			Watts	2,820	2,920	3,040	2,840	2,930	3,040	2,920	2,960	3,060
		Lv. Db/Wb	52.3/51.9	56.2/56.2	60.2/60.2	52.4/51.7	56.5/56.2	60.5/60.5	53.8/51.1	56.8/56.0	60.7/60.4	
		1,400	Total	39,700	42,200	44,900	40,500	42,500	45,200	43,000	43,200	45,400
Sensible	32,200		26,300	20,400	39,200	33,500	27,400	43,000	40,600	34,700		
Watts	2,850		2,960	3,070	2,880	2,970	3,080	3,000	3,010	3,090		
Lv. Db/Wb	54.1/53.4	57.9/57.7	61.8/61.8	54.6/53.1	58.3/57.7	62.2/62.0	57.1/52.5	58.7/57.5	62.5/61.9			
75	5	1,000	Total	36,700	39,300	42,000	37,100	39,400	42,100	37,900	39,800	42,300
			Sensible	27,200	22,900	18,500	32,400	28,100	23,700	37,700	33,300	28,900
			Watts	2,860	2,970	3,090	2,880	2,980	3,100	2,940	3,000	3,110
		Lv. Db/Wb	50.3/50.2	54.2/54.2	58.1/58.1	50.5/50.0	54.5/54.3	58.5/58.5	50.8/49.7	54.7/54.2	58.7/58.7	
		1,200	Total	3,700	40,500	43,100	38,400	40,600	43,300	40,300	41,100	43,400
			Sensible	29,600	24,400	19,300	36,000	30,600	25,400	40,300	36,800	31,600
			Watts	2,910	3,020	3,140	2,940	3,030	3,150	3,020	3,060	3,160
		Lv. Db/Wb	52.6/52.2	56.5/56.5	60.3/60.3	52.8/52.0	56.8/56.5	60.7/60.7	54.5/51.4	57.1/56.3	61.1/60.7	
		1,400	Total	38,800	41,300	43,900	39,700	41,600	44,200	42,000	42,300	44,400
Sensible	31,800		25,900	20,100	38,600	33,000	27,100	42,000	40,100	34,200		
Watts	2,950		3,060	3,180	2,980	3,070	3,190	3,100	3,110	3,200		
Lv. Db/Wb	54.3/53.6	58.2/58.0	61.9/61.9	54.9/53.4	58.5/57.9	62.4/62.2	57.7/52.8	59.0/57.7	62.8/62.1			
75	7	1,000	Total	37,600	40,300	43,000	38,000	40,400	43,200	38,800	40,800	43,300
			Sensible	27,500	23,200	18,800	32,900	28,400	24,000	38,200	33,800	29,300
			Watts	2,760	2,860	2,980	2,780	2,870	2,980	2,840	2,890	2,990
		Lv. Db/Wb	50.0/49.8	53.9/53.9	57.9/57.9	50.1/49.6	54.2/54.0	58.2/58.2	50.3/49.3	54.3/53.9	58.4/58.4	
		1,200	Total	38,800	41,500	44,200	39,400	41,600	44,400	41,300	42,100	44,500
			Sensible	30,000	24,800	19,600	36,400	31,000	25,800	41,300	37,300	32,000
			Watts	2,810	2,910	3,030	2,830	2,920	3,030	2,910	2,950	3,050
		Lv. Db/Wb	42.3/51.9	56.2/56.2	60.2/60.2	52.4/51.7	56.5/56.2	60.5/60.4	53.7/51.1	56.8/56.0	60.7/60.4	
		1,400	Total	39,800	42,300	45,000	40,600	42,600	45,300	43,100	43,300	45,500
Sensible	32,200		26,300	20,400	39,200	33,500	27,400	43,100	40,600	34,700		
Watts	2,840		2,950	3,060	2,870	2,960	3,070	2,990	3,000	3,080		
Lv. Db/Wb	54.1/53.3	57.9/57.7	61.8/61.8	54.6/53.1	58.3/57.6	62.2/61.9	57.0/52.5	58.7/57.4	62.5/61.9			
85	7	1,000	Total	35,900	38,500	41,000	36,300	38,500	41,200	37,000	38,900	41,300
			Sensible	26,800	22,600	18,300	32,000	27,700	23,400	37,000	32,900	28,500
			Watts	2,950	3,060	3,180	2,970	3,070	3,190	3,030	3,090	3,200
		Lv. Db/Wb	50.6/50.5	54.5/54.5	58.4/58.4	50.9/50.3	54.8/54.7	58.8/58.8	51.3/50.0	55.1/54.5	59.1/59.0	
		1,200	Total	37,000	39,600	42,200	37,600	39,700	42,400	39,400	40,200	42,500
			Sensible	29,200	24,100	19,100	35,500	30,200	25,100	39,400	36,300	31,200
			Watts	3,000	3,110	3,230	3,030	3,120	3,240	3,110	3,150	3,250
		Lv. Db/Wb	52.9/52.4	56.7/56.7	60.5/60.5	53.1/52.2	57.1/56.7	61.0/61.0	55.2/51.7	57.5/56.6	61.4/61.0	
		1,400	Total	38,000	40,400	43,000	38,800	40,700	43,200	41,100	41,400	43,400
Sensible	31,400		25,600	19,800	38,100	32,600	26,700	41,100	39,500	33,800		
Watts	3,040		3,150	3,270	3,070	3,160	3,280	3,190	3,200	3,290		
Lv. Db/Wb	54.6/53.8	58.4/58.2	62.1/62.1	55.2/53.6	58.8/58.1	62.6/62.4	58.3/53.0	59.3/57.9	63.1/62.3			
85	9	1,000	Total	36,400	39,100	41,700	36,800	39,100	41,800	37,600	39,500	42,000
			Sensible	27,000	22,700	18,400	32,200	27,900	23,500	37,400	33,100	28,700
			Watts	2,890	3,000	3,120	2,910	3,010	3,130	2,970	3,030	3,140
		Lv. Db/Wb	50.5/50.3	54.4/54.4	58.3/58.3	50.7/50.1	54.7/54.5	58.6/58.6	51.0/49.8	54.9/54.3	58.9/58.8	
		1,200	Total	37,600	40,200	42,800	38,200	40,300	43,000	40,000	40,800	43,100
			Sensible	29,400	24,300	19,200	35,700	30,400	25,300	40,000	36,500	31,400
			Watts	2,940	3,050	3,170	2,970	3,060	3,180	3,050	3,090	3,190
		Lv. Db/Wb	52.7/52.3	56.6/56.6	60.4/60.4	52.9/52.1	57.0/56.5	60.9/60.8	54.7/51.5	57.3/56.4	61.2/60.8	
		1,400	Total	38,500	41,000	43,600	39,400	41,300	43,800	41,700	42,000	44,000
Sensible	31,600		25,800	20,000	38,400	32,800	26,900	41,700	39,800	34,000		
Watts	2,980		3,090	3,210	3,010	3,100	3,220	3,130	3,140	3,230		
Lv. Db/Wb	54.5/53.7	58.3/58.0	62.0/62.0	55.1/53.5	58.7/58.0	62.5/62.3	57.9/52.8	59.2/57.8	62.9/62.2			
90	9	1,000	Total	35,500	38,100	40,600	35,900	38,200	40,800	36,700	38,500	40,900
			Sensible	26,600	22,400	18,200	31,800	27,500	23,200	36,700	32,700	28,300
			Watts	3,000	3,110	3,230	3,010	3,120	3,240	3,080	3,140	3,250
		Lv. Db/Wb	50.8/50.6	54.6/54.6	58.5/58.5	51.1/50.5	55.0/54.8	58.9/58.9	51.7/50.2	55.3/54.7	59.3/59.2	
		1,200	Total	36,600	39,200	41,700	37,200	39,300	41,900	39,000	39,800	42,100
			Sensible	29,000	24,000	19,000	35,300	30,000	24,900	39,000	36,100	31,000
			Watts	3,050	3,160	3,280	3,070	3,170	3,290	3,160	3,200	3,310
		Lv. Db/Wb	53.0/52.5	56.8/56.8	60.6/60.6	53.3/52.4	57.3/56.8	61.1/61.1	55.5/51.8	57.7/56.7	61.5/61.1	
		1,400	Total	37,600	40,000	42,500	38,400	40,200	42,800	40,700	41,000	43,000
Sensible	31,200		25,400	19,700	37,900	32,400	26,600	40,700	39,300	33,500		
Watts	3,090		3,200	3,320	3,120	3,210	3,330	3,240	3,250	3,350		
Lv. Db/Wb	54.7/53.9	58.5/58.3	62.2/62.2	55.4/53.7	59.0/58.2	62.8/62.5	58.6/53.1	59.5/58.0	63.2/62.4			

**Note:** Above performance data gives gross evaporator capacity.

# Cooling Ratings

## SW60

Ent. Water Temp. °F	GPM	CFM	Capacity	Entering Air Dry Bulb Temperature								
				75°F Entering Air Wet Bulb Temp.			80°F Entering Air Wet Bulb Temp.			85°F Entering Air Wet Bulb Temp.		
				63°F	67°F	71°F	63°F	67°F	71°F	63°F	67°F	71°F
65	7	1,600	Total Sensible Watts Lv. Db/Wb	62,100 44,700 4,730 49.6/49.3	66,600 37,600 4,910 53.7/53.5	71,000 30,500 5,110 57.7/57.7	62,800 53,300 4,760 49.7/49.1	66,700 46,100 4,930 53.8/53.5	71,300 38,900 5,120 57.9/57.9	64,100 61,900 4,860 49.8/48.8	67,300 54,800 4,960 53.9/53.4	71,500 47,500 5,140 58.0/57.9
		2,000	Total Sensible Watts Lv. Db/Wb	64,000 48,700 4,810 52.9/52.0	68,500 40,200 5,000 56.7/56.3	73,000 31,800 5,190 60.6/60.6	65,100 59,100 4,860 53.1/51.8	68,700 50,300 5,010 57.1/56.3	73,300 41,800 5,210 61.0/60.6	68,200 67,300 5,000 54.4/51.2	69,600 60,500 5,060 57.5/56.1	73,500 52,000 5,230 61.4/60.5
		2,400	Total Sensible Watts Lv. Db/Wb	65,700 52,300 4,880 55.2/53.7	69,900 42,700 5,060 58.8/58.1	74,300 33,000 5,250 62.5/62.3	67,100 63,500 4,930 55.9/53.5	70,300 54,300 5,080 59.4/58.0	74,700 44,500 5,270 63.1/62.3	71,100 70,300 5,130 58.4/52.9	71,600 65,800 5,140 60.1/57.9	75,100 56,200 5,290 63.7/62.3
75	8	1,600	Total Sensible Watts Lv. Db/Wb	60,300 44,000 4,940 50.0/49.8	64,600 37,000 5,130 54.0/54.0	69,000 30,000 5,330 58.0/58.0	61,000 52,500 4,970 50.2/49.6	64,800 45,400 5,150 54.2/54.0	69,200 38,300 5,350 58.2/58.2	62,200 60,900 5,080 50.4/49.3	65,400 53,900 5,180 54.4/53.8	69,400 46,700 5,360 58.5/58.3
		2,000	Total Sensible Watts Lv. Db/Wb	62,200 47,900 5,030 53.2/52.3	66,500 39,600 5,220 57.0/56.7	70,800 31,300 5,420 60.8/60.8	63,200 58,200 5,070 53.6/52.2	66,700 49,500 5,230 57.5/56.6	71,200 41,100 5,430 61.3/60.9	66,200 66,200 5,220 54.9/51.6	67,600 59,500 5,280 58.0/56.5	71,400 51,100 5,450 61.8/60.9
		2,400	Total Sensible Watts Lv. Db/Wb	63,800 51,500 5,090 55.5/54.0	67,800 42,000 5,280 59.1/58.4	72,200 32,500 5,480 62.7/62.6	65,200 62,500 5,150 56.3/53.8	68,300 53,500 5,300 59.8/58.3	72,600 43,800 5,500 63.4/62.6	69,000 69,000 5,350 58.9/53.2	69,500 64,800 5,370 60.5/58.1	72,900 55,300 5,520 64.0/62.5
75	10	1,600	Total Sensible Watts Lv. Db/Wb	61,200 44,300 4,840 49.8/49.5	65,600 37,300 5,020 53.8/53.8	70,000 30,200 5,220 57.8/57.8	61,900 52,900 4,870 49.9/49.4	65,700 45,800 5,040 54.0/53.7	70,300 38,600 5,230 58.1/58.1	63,200 61,400 4,970 50.1/49.0	66,300 54,300 5,070 54.1/53.6	70,500 47,100 5,250 58.2/58.1
		2,000	Total Sensible Watts Lv. Db/Wb	63,100 48,300 4,920 53.0/52.2	67,500 39,900 5,110 56.9/56.5	71,900 31,500 5,300 60.7/60.7	64,100 58,600 4,970 53.3/52.0	67,700 49,900 5,120 57.3/56.4	72,200 41,500 5,320 61.2/60.7	67,200 66,800 5,110 54.7/51.4	68,600 60,000 5,170 57.7/56.3	72,400 51,500 5,340 61.6/60.7
		2,400	Total Sensible Watts Lv. Db/Wb	64,700 51,900 4,990 55.3/53.9	68,900 42,300 5,170 59.0/58.2	73,300 32,800 5,370 62.6/62.5	66,100 63,000 5,040 56.1/53.7	69,300 53,900 5,190 59.6/58.2	73,700 44,200 5,390 63.3/62.4	70,100 69,700 5,240 58.6/53.1	70,500 65,300 5,250 60.3/58.0	74,000 55,800 5,410 63.9/62.4
85	10	1,600	Total Sensible Watts Lv. Db/Wb	58,700 43,300 5,140 50.4/50.2	62,900 36,500 5,340 54.3/54.3	67,100 29,600 5,540 58.2/58.2	59,300 51,700 5,170 50.6/50.0	63,000 44,700 5,350 54.6/54.4	67,400 37,800 5,560 58.5/58.5	60,600 60,100 5,280 50.9/49.7	63,600 53,100 5,390 54.8/54.2	67,600 46,100 5,580 58.8/58.7
		2,000	Total Sensible Watts Lv. Db/Wb	60,500 47,200 5,230 53.5/52.7	64,700 39,000 5,430 57.3/57.0	68,900 30,800 5,640 61.0/61.0	61,500 57,300 5,280 53.9/52.5	64,900 48,800 5,440 57.8/56.9	69,200 40,600 5,650 61.6/61.2	64,400 64,400 5,430 55.7/51.9	65,700 58,700 5,490 58.3/56.8	69,400 50,400 5,670 62.1/61.2
		2,400	Total Sensible Watts Lv. Db/Wb	62,000 50,800 5,300 55.8/54.3	66,000 41,400 5,490 59.3/58.6	70,200 32,100 5,700 62.9/62.9	63,400 61,600 5,350 56.7/54.1	66,500 52,700 5,520 60.0/58.6	70,600 43,200 5,720 63.6/62.8	67,200 67,200 5,570 59.6/53.5	67,600 63,900 5,580 60.8/58.4	70,900 54,600 5,740 64.3/62.8
85	15	1,600	Total Sensible Watts Lv. Db/Wb	59,800 43,800 5,000 50.1/49.9	64,100 36,800 5,190 54.1/54.1	68,500 29,900 5,390 58.0/58.0	60,500 52,300 5,030 50.3/49.7	64,300 45,200 5,210 54.3/54.1	68,700 38,200 5,410 58.3/58.3	61,800 60,700 5,140 50.5/49.4	64,900 53,700 5,240 54.5/53.9	68,900 46,500 5,420 58.6/58.4
		2,000	Total Sensible Watts Lv. Db/Wb	61,700 47,700 5,080 53.3/52.4	66,000 39,400 5,280 57.1/56.7	70,300 31,200 5,480 60.8/60.8	62,700 57,900 5,130 53.7/52.2	66,200 49,300 5,290 57.6/56.7	70,600 41,000 5,500 61.4/61.0	65,700 65,700 5,280 55.1/51.7	67,100 59,300 5,340 58.1/56.6	70,800 50,900 5,520 61.9/60.9
		2,400	Total Sensible Watts Lv. Db/Wb	63,300 51,300 5,150 55.6/54.1	67,300 41,800 5,340 59.2/58.5	71,600 32,400 5,540 62.7/62.7	64,700 62,300 5,210 56.4/53.9	67,800 53,200 5,360 59.8/58.4	72,000 43,600 5,570 63.5/62.7	68,500 68,500 5,410 59.0/53.3	69,000 64,500 5,430 60.6/58.2	72,400 55,100 5,590 64.1/62.6
90	15	1,600	Total Sensible Watts Lv. Db/Wb	58,600 43,200 5,160 50.4/50.2	62,800 36,400 5,360 54.3/54.3	67,000 29,500 5,560 58.2/58.2	59,200 51,600 5,190 50.7/50.0	62,900 44,700 5,370 54.6/54.4	67,300 37,700 5,580 58.6/58.6	60,500 59,900 5,300 50.9/49.7	63,500 53,000 5,410 54.9/54.3	67,500 46,000 5,600 58.9/58.8
		2,000	Total Sensible Watts Lv. Db/Wb	60,400 47,100 5,250 53.6/52.7	64,600 38,900 5,450 57.3/57.0	68,800 30,800 5,660 61.0/61.0	61,400 57,200 5,300 54.0/52.5	64,800 48,700 5,460 57.9/57.0	69,100 40,500 5,670 61.6/61.2	64,300 64,300 5,450 55.8/51.9	65,600 58,500 5,510 58.4/56.8	69,300 50,300 5,690 62.1/61.2
		2,400	Total Sensible Watts Lv. Db/Wb	61,900 50,600 5,320 55.8/54.3	65,900 41,300 5,510 59.4/58.6	70,100 32,000 5,720 62.9/62.9	63,300 61,500 5,370 56.7/54.1	66,400 52,600 5,540 60.1/58.6	70,500 43,100 5,740 63.7/62.8	67,100 67,100 5,590 59.6/53.5	67,500 63,700 5,600 60.9/58.4	70,800 54,400 5,770 64.4/62.8

**Note:** Above performance data gives gross evaporator capacity.

# Cooling Ratings SW90

Ent. Water Temp. °F	GPM	CFM	Capacity	Entering Air Dry Bulb Temperature								
				75°F Entering Air Wet Bulb Temp.			80°F Entering Air Wet Bulb Temp.			85°F Entering Air Wet Bulb Temp.		
				63°F	67°F	71°F	63°F	67°F	71°F	63°F	67°F	71°F
65		2,500	Total	92,400	99,000	106,000	93,400	99,200	106,000	95,400	100,000	106,000
			Sensible	67,400	56,700	46,000	80,500	69,600	58,700	93,400	82,700	71,600
			Watts	6,940	7,200	7,480	6,980	7,220	7,500	7,130	7,270	7,520
		Lv. Db/Wb	50.5/50.0	54.4/54.3	58.3/58.3	50.7/49.9	54.7/54.2	58.6/58.6	51.0/49.6	54.9/54.1	58.9/58.6	
		3,000	Total	95,300	102,000	109,000	96,800	102,000	109,000	101,000	104,000	109,000
			Sensible	73,500	60,600	48,000	89,200	75,900	63,100	101,000	91,200	78,400
			Watts	7,050	7,330	7,600	7,120	7,340	7,630	7,330	7,410	7,660
		Lv. Db/Wb	52.7/52.1	56.6/56.4	60.5/60.5	53.0/51.9	57.0/56.4	60.9/60.7	54.3/51.3	57.4/56.2	61.2/60.6	
		3,500	Total	97,700	104,000	111,000	99,800	105,000	111,000	106,000	106,000	112,000
Sensible	78,900		64,400	49,900	95,900	82,000	67,200	106,000	99,400	84,900		
Watts	7,150		7,410	7,690	7,220	7,440	7,720	7,510	7,530	7,750		
Lv. Db/Wb	54.5/53.5	58.3/57.9	62.0/62.0	55.1/53.3	58.7/57.8	62.6/62.1	57.5/52.7	59.2/57.6	63.0/62.1			
75	13	2,500	Total	89,900	96,400	103,000	90,900	96,600	103,000	92,800	97,500	104,000
			Sensible	66,900	56,200	45,600	79,800	69,100	58,300	92,700	82,000	71,100
			Watts	7,280	7,550	7,850	7,320	7,580	7,870	7,480	7,620	7,890
		Lv. Db/Wb	50.7/50.4	54.5/54.5	58.4/58.4	51.0/50.3	54.9/54.6	58.8/58.8	51.3/50.0	55.2/54.5	59.2/59.0	
		3,000	Total	92,700	99,200	106,000	94,200	99,500	106,000	98,700	101,000	106,000
			Sensible	72,900	60,200	47,600	88,500	75,300	62,600	98,700	90,500	77,800
			Watts	7,400	7,680	7,980	7,470	7,700	8,000	7,680	7,770	8,030
		Lv. Db/Wb	52.9/52.4	56.8/56.7	60.6/60.6	53.2/52.2	57.2/56.7	61.0/61.0	55.1/51.6	57.6/56.5	61.4/60.9	
		3,500	Total	95,100	101,000	108,000	97,200	102,000	108,000	103,000	104,000	109,000
Sensible	78,300		63,900	49,500	95,100	81,300	66,600	103,000	98,600	84,200		
Watts	7,500		7,780	8,070	7,580	7,810	8,100	7,880	7,900	8,130		
Lv. Db/Wb	54.7/53.8	58.4/58.2	62.2/62.2	55.3/53.6	58.9/58.1	62.7/62.4	58.3/53.0	59.4/57.9	63.1/62.3			
75	16	2,500	Total	91,100	97,700	104,000	92,100	97,900	105,000	94,000	98,800	105,000
			Sensible	67,200	56,500	45,900	80,200	69,400	58,600	93,200	82,400	71,500
			Watts	7,140	7,420	7,700	7,190	7,440	7,730	7,340	7,480	7,750
		Lv. Db/Wb	50.6/50.3	54.4/54.4	58.3/58.3	50.8/50.1	54.8/54.4	58.7/58.7	51.1/49.8	55.0/54.3	59.0/58.8	
		3,000	Total	93,900	100,000	107,000	95,500	101,000	108,000	100,000	102,000	108,000
			Sensible	73,300	60,500	47,800	88,900	75,700	62,900	100,000	91,000	78,200
			Watts	7,270	7,540	7,830	7,330	7,560	7,850	7,540	7,630	7,890
		Lv. Db/Wb	52.8/52.3	56.7/56.6	60.5/60.5	53.0/52.1	57.1/56.5	60.9/60.8	54.7/51.5	57.4/56.4	61.3/60.8	
		3,500	Total	96,400	103,000	109,000	98,500	103,000	110,000	104,000	105,000	110,000
Sensible	78,700		64,200	49,700	95,600	81,800	67,000	104,000	99,100	84,600		
Watts	7,360		7,640	7,920	7,440	7,670	7,950	7,730	7,760	7,980		
Lv. Db/Wb	54.6/53.7	58.3/58.0	62.1/62.1	55.2/53.4	58.8/58.0	62.6/62.2	57.9/52.8	59.3/57.8	63.0/62.2			
85	16	2,500	Total	87,600	93,900	100,000	88,600	94,100	101,000	90,400	95,000	101,000
			Sensible	65,900	55,400	45,000	78,700	68,000	57,400	90,400	80,800	70,000
			Watts	7,560	7,850	8,150	7,610	7,870	8,180	7,770	7,920	8,200
		Lv. Db/Wb	51.0/50.8	54.8/54.8	58.6/58.6	51.4/50.7	55.3/55.3	59.1/59.1	52.1/50.4	55.6/54.9	59.5/59.4	
		3,000	Total	90,300	96,600	103,000	91,800	96,900	103,000	96,100	98,200	104,000
			Sensible	71,800	59,300	46,900	87,200	74,200	61,700	96,100	89,200	76,600
			Watts	7,690	7,980	8,290	7,760	8,000	8,310	7,980	8,070	8,340
		Lv. Db/Wb	53.2/52.7	57.0/57.0	60.8/60.8	53.6/52.5	57.5/57.0	61.3/61.3	55.9/52.0	58.0/56.8	61.8/61.2	
		3,500	Total	92,600	98,500	105,000	94,700	99,200	105,000	100,000	101,000	106,000
Sensible	77,200		62,900	48,700	93,700	80,100	65,700	100,000	97,100	83,000		
Watts	7,790		8,080	8,380	7,870	8,110	8,420	8,180	8,210	8,450		
Lv. Db/Wb	55.0/54.1	58.7/58.4	62.3/62.3	55.7/53.8	59.2/58.3	62.9/62.6	59.0/53.3	59.8/58.2	63.5/62.6			
85	24	2,500	Total	89,100	95,500	102,000	90,100	95,700	102,000	92,000	96,600	103,000
			Sensible	66,500	56,000	45,400	79,400	68,700	58,000	92,000	81,600	70,700
			Watts	7,370	7,650	7,950	7,420	7,680	7,970	7,570	7,720	8,000
		Lv. Db/Wb	50.8/50.6	54.7/54.7	58.5/58.5	51.1/50.4	55.0/54.8	58.9/58.9	51.5/50.1	55.3/54.6	59.3/59.1	
		3,000	Total	91,900	98,300	105,000	93,400	98,600	105,000	97,800	99,900	106,000
			Sensible	72,500	59,800	47,300	88,000	74,900	62,200	97,800	90,000	77,400
			Watts	7,500	7,780	8,080	7,570	7,800	8,100	7,780	7,870	8,140
		Lv. Db/Wb	53.0/52.5	56.9/56.8	60.7/60.7	53.3/52.3	57.3/56.8	61.1/61.1	55.4/51.8	57.7/56.7	61.6/61.0	
		3,500	Total	94,300	100,000	107,000	96,300	101,000	107,000	102,000	103,000	108,000
Sensible	77,900		63,500	49,200	94,600	80,900	66,300	102,000	98,000	83,700		
Watts	7,600		7,880	8,170	7,680	7,910	8,210	7,980	8,000	8,240		
Lv. Db/Wb	54.8/53.9	58.5/58.3	62.2/62.2	55.4/53.7	59.0/58.2	62.8/62.4	58.5/53.1	59.5/58.0	63.2/62.4			
90	24	2,500	Total	87,300	93,600	99,900	88,300	93,800	100,000	90,100	94,700	101,000
			Sensible	65,700	55,300	44,800	78,400	67,900	57,300	90,100	80,600	69,900
			Watts	7,590	7,880	8,180	7,640	7,900	8,210	7,800	7,950	8,230
		Lv. Db/Wb	51.1/50.8	54.9/54.9	58.7/58.7	51.5/50.7	55.3/55.3	59.2/59.2	52.2/50.4	55.7/54.9	59.6/59.4	
		3,000	Total	90,000	96,300	103,000	91,500	96,600	103,000	95,800	97,900	103,000
			Sensible	71,600	59,100	46,800	87,000	74,000	61,500	95,800	88,900	76,400
			Watts	7,720	8,010	8,320	7,790	8,030	8,340	8,010	8,100	8,380
		Lv. Db/Wb	53.3/52.8	57.1/57.1	60.8/60.8	53.7/52.6	57.6/57.2	61.4/61.3	56.0/52.0	58.0/56.9	61.8/61.3	
		3,500	Total	92,300	98,200	105,000	94,400	98,900	105,000	100,000	101,000	106,000
Sensible	77,000		62,800	48,600	93,500	79,900	65,500	100,000	96,900	82,700		
Watts	7,820		8,110	8,420	7,900	8,140	8,450	8,210	8,240	8,480		
Lv. Db/Wb	55.0/54.1	58.7/58.5	62.4/62.4	55.7/53.9	59.2/58.4	63.0/62.6	59.0/53.3	59.8/58.2	63.5/62.6			

**Note:** Above performance data gives gross evaporator capacity.

# Cooling Ratings

## SW120

Ent. Water Temp. °F	GPM	CFM	Capacity	Entering Air Dry Bulb Temperature								
				75°F Entering Air Wet Bulb Temp.			80°F Entering Air Wet Bulb Temp.			85°F Entering Air Wet Bulb Temp.		
				63°F	67°F	71°F	63°F	67°F	71°F	63°F	67°F	71°F
				Total	Sensible	Watts	Lv. Db/Wb	Total	Sensible	Watts	Lv. Db/Wb	Total
65	14	3,200	Total	125,000	134,000	143,000	126,000	134,000	143,000	129,000	135,000	144,000
			Sensible	90,000	75,700	61,400	107,000	92,900	78,400	125,000	110,000	95,600
			Watts	9,540	9,910	10,300	9,610	9,940	10,300	9,810	10,000	10,400
		4,000	Total	129,000	138,000	147,000	131,000	138,000	147,000	137,000	140,000	148,000
			Sensible	98,100	80,900	64,000	119,000	101,000	84,200	136,000	122,000	105,000
			Watts	9,710	10,100	10,500	9,800	10,100	10,500	10,100	10,200	10,500
		4,800	Total	132,000	140,000	149,000	135,000	141,000	150,000	143,000	144,000	151,000
			Sensible	105,000	85,900	66,600	128,000	109,000	89,700	142,000	133,000	113,000
			Watts	9,840	10,200	10,600	9,940	10,200	10,600	10,300	10,400	10,700
75	16	3,200	Total	121,000	130,000	139,000	123,000	130,000	139,000	125,000	131,000	140,000
			Sensible	88,500	74,500	60,400	106,000	91,400	77,200	123,000	109,000	94,100
			Watts	9,920	10,300	10,700	9,990	10,300	10,700	10,200	10,400	10,800
		4,000	Total	125,000	134,000	142,000	127,000	134,000	143,000	133,000	136,000	143,000
			Sensible	96,500	79,700	63,000	117,000	99,700	82,900	133,000	120,000	103,000
			Watts	10,100	10,500	10,900	10,200	10,500	10,900	10,500	10,600	11,000
		4,800	Total	128,000	136,000	145,000	131,000	137,000	146,000	139,000	140,000	147,000
			Sensible	104,000	84,500	65,500	126,000	108,000	88,200	139,000	131,000	111,000
			Watts	10,200	10,600	11,000	10,300	10,600	11,000	10,700	10,800	11,100
75	20	3,200	Total	123,000	132,000	141,000	124,000	132,000	141,000	127,000	133,000	142,000
			Sensible	89,200	75,100	60,900	107,000	92,200	77,800	124,000	109,000	94,900
			Watts	9,730	10,100	10,500	9,800	10,100	10,500	10,000	10,200	10,600
		4,000	Total	127,000	136,000	145,000	129,000	136,000	145,000	135,000	138,000	146,000
			Sensible	97,300	80,300	63,500	118,000	101,000	83,500	134,000	121,000	104,000
			Watts	9,900	10,300	10,700	10,000	10,300	10,700	10,300	10,400	10,700
		4,800	Total	130,000	138,000	147,000	133,000	139,000	148,000	141,000	142,000	149,000
			Sensible	105,000	85,200	66,000	127,000	109,000	88,900	140,000	132,000	112,000
			Watts	10,000	10,400	10,800	10,100	10,400	10,800	10,500	10,600	10,900
85	20	3,200	Total	118,000	126,000	135,000	119,000	127,000	135,000	122,000	128,000	136,000
			Sensible	87,200	73,400	59,500	104,000	90,000	76,000	121,000	107,000	92,700
			Watts	10,300	10,700	11,100	10,400	10,700	11,100	10,600	10,800	11,200
		4,000	Total	122,000	130,000	139,000	124,000	131,000	139,000	129,000	132,000	140,000
			Sensible	95,100	78,500	62,100	115,000	98,200	81,600	129,000	118,000	101,000
			Watts	10,500	10,900	11,300	10,600	10,900	11,300	10,900	11,000	11,400
		4,800	Total	125,000	133,000	141,000	127,000	134,000	142,000	135,000	136,000	143,000
			Sensible	102,000	83,300	64,500	124,000	106,000	86,900	135,000	129,000	110,000
			Watts	10,600	11,000	11,400	10,700	11,100	11,500	11,200	11,200	11,500
85	30	3,200	Total	120,000	129,000	138,000	122,000	129,000	138,000	124,000	130,000	139,000
			Sensible	88,200	74,200	60,200	105,000	91,100	76,900	122,000	108,000	93,700
			Watts	10,000	10,400	10,800	10,100	10,400	10,800	10,300	10,500	10,900
		4,000	Total	124,000	133,000	141,000	126,000	133,000	142,000	132,000	135,000	142,000
			Sensible	96,100	79,300	62,800	117,000	99,300	82,500	132,000	119,000	103,000
			Watts	10,200	10,600	11,000	10,300	10,600	11,000	10,600	10,700	11,100
		4,800	Total	127,000	135,000	144,000	130,000	136,000	145,000	138,000	139,000	145,000
			Sensible	103,000	84,200	65,200	125,000	107,000	87,900	138,000	130,000	111,000
			Watts	10,300	10,700	11,100	10,400	10,700	11,200	10,800	10,900	11,200
90	30	3,200	Total	118,000	126,000	135,000	119,000	126,000	135,000	121,000	128,000	136,000
			Sensible	87,000	73,200	59,400	104,000	89,900	75,900	121,000	107,000	92,500
			Watts	10,400	10,800	11,200	10,500	10,800	11,200	10,700	10,900	11,300
		4,000	Total	121,000	130,000	138,000	123,000	130,000	139,000	129,000	132,000	139,000
			Sensible	94,900	78,300	61,900	115,000	98,000	81,400	129,000	118,000	101,000
			Watts	10,600	11,000	11,400	10,700	11,000	11,400	11,000	11,100	11,500
		4,800	Total	124,000	132,000	141,000	127,000	133,000	142,000	135,000	136,000	142,000
			Sensible	102,000	83,100	64,400	124,000	106,000	86,700	135,000	128,000	110,000
			Watts	10,700	11,100	11,500	10,800	11,200	11,600	11,300	11,300	11,600

Note: Above performance data gives gross evaporator capacity.

# Heating Coil Specifications

## For Field Installation in SW Units

Model	Heating Coil Type	Kit Model Number	Face Area Sq. Ft.	Fins Per Inch	Rows Deep	Conn. Size MPT
SW36	Non-Freeze Steam Hot Water	7600-204	3.3	6	2	1 1/4"
		7600-207	3.0	6	2	3/4"
SW60	Non-Freeze Steam Hot Water	7600-205	4.3	6	2	1 1/2"
		7600-208	3.9	6	2	1"
SW90	Non-Freeze Steam Hot Water	7600-206	6.6	6	2	1 1/2"
		7600-209	6.2	6	2	1 1/4"
SW120	Non-Freeze Steam Hot Water	7600-229	9.3	6	2	1 1/2"
		7600-230	8.8	6	2	1 1/2"

## Steam Coil Correction Factors

Steam Pressure		2 PSIG	5 PSIG
Entering Air Temp. °F	40°	1.21	1.25
	50°	1.13	1.18
	60°	1.06	1.11
	70°	1.00	1.05

## Heating Coil Capacities

Model	CFM	Steam Coil		Hot Water Coil			
		Heating Capacity BTUH*	°F Lvg. Air Temp.	Heating Capacity BTUH**	°F Lvg. Air Temp.	GPM	W.P.D. Ft. Head
SW36	1,000	74,500	139	57,200	123	5.7	1.2
	1,200	81,000	133	65,300	120	6.5	1.6
	1,400	87,500	128	72,800	118	7.3	1.9
SW60	1,600	124,200	142	88,300	121	8.8	2.0
	2,000	135,000	133	102,500	117	10.3	2.5
	2,400	145,800	126	116,300	115	11.6	3.3
SW90	2,500	191,400	141	141,900	122	14.2	5.2
	3,000	208,000	134	160,600	119	16.1	6.5
	3,500	224,600	129	178,600	117	17.9	8.4
SW120	3,200	233,700	138	185,400	124	18.5	2.8
	4,000	254,000	129	215,900	120	21.6	3.6
	4,800	274,300	123	245,300	117	24.5	5.2

\* Capacity based on 2 PSIG steam and 70°F entering air.

\*\* Capacity based on 200°F entering water, 180°F leaving water and 70°F entering air.

## Hot Water Coil Correction Factors

Entering Water Temp. °F	Entering Air Temp.			
	40°	50°	60°	70°
160°	0.96	0.90	0.82	0.74
180°	1.08	1.02	0.95	0.87
200°	1.23	1.16	1.08	1.00

## Condenser Water Data

Model	GPM Versus Water Pressure Drop									
	GPM	4	5	6	7	8	9	—	—	—
SW36	P.S.I.	1.0	1.6	2.3	3.1	4.0	5.2	—	—	—
	Feet	2.3	3.6	5.2	7.1	9.2	12.0	—	—	—
SW60	GPM	7	8	9	10	11	12	13	14	15
	P.S.I.	1.8	2.3	2.9	3.6	4.4	5.2	6.1	7.1	8.1
SW90	GPM	10	12	14	16	18	20	22	24	—
	P.S.I.	1.3	2.0	2.8	3.6	4.6	5.6	6.8	8.1	—
SW120	GPM	14	16	18	20	22	24	26	28	30
	P.S.I.	1.8	2.3	2.9	3.6	4.4	5.2	6.1	7.1	8.1
	Feet	4.2	5.3	6.7	8.3	10.2	12.0	14.1	16.4	18.7

## Plenum Air Flow Data

Model	With Plenum Max. Air Throw Straight Vane Setting
SW36	@ 1000 CFM = 44'
SW60	@ 2000 CFM = 70'
SW90	@ 3000 CFM = 102'
SW120	@ 4000 CFM = 118'

Specifications and performance data subject to change without notice.

# HEAT CONTROLLER, INC.

1900 WELLWORTH AVENUE • JACKSON, MICHIGAN 49203

THE QUALITY LEADER IN CONDITIONING AIR