



FMHB

Cooling Only/Heat Pump
Nominal Circuits:
9,000 - 48,000 BTU/h



Description

The **FMHB** air handler offers performance and style enhancements all new for 1999. The new **FMHB** incorporates a new streamlined high impact polystyrene top with an electronic control pad. Also new for 1999, unit mounted infrared controls and an optional hand held remote.

The new cabinet's rounded corners, smooth surfaces and metal grills are a step above what the competition has to offer. Its large supply and return grills ensure superior air flow in both heating and cooling capacities. The **FMHB** has standard fresh air knockouts to allow circulation of outside air.

Electric or hot water heating options are available on **FMHB** models. The **FMHB** serves as a two-stage heating product when the electric heat option is selected.

The **FMHB** operates with very low sound levels and is available with several new options. **FMHB** is compatible with any **Comfort-Aire** outdoor unit.

All **Comfort-Aire** products are subject to ongoing development programs; design and specifications may change without notice.

Capacities/Efficiency

The **FMHB** is a 10+ SEER air handler when paired with a **Comfort-Aire** outdoor unit. Refer to the **Comfort-Aire** System Configuration Chart or consult the factory for more information.

Refrigeration Circuit:

The **FMHB** is equipped with a Flo-Rater/Piston Expansion device. The device will check cooling operation and open for heat pump operation. Refrigeration connections are male flare.

Materials of Construction

Cabinet:

94 HB polystyrene top
Fabricated of 20 gauge Galvaneal steel
Powder coat textured finish

Intake Grill:

Anodized aluminum grill w/radius ends

Discharge Grill:

Aluminum w/structural supports

Condensate Removal and Drain Pan:

Pitched galvanized steel w/anticorrosion coating

Finishes:

Cabinet - designer white powder coat
Grills - anodized aluminum (satin finish)
Top - Solid color polystyrene (designerwhite)

Air Systems:

Fan:

Dynamically balanced, motor shaft driven, centrifugal fans

Motor:

Permanent Split Capacitor (PSC) type w/overload protection

Air Stream Surfaces:

Galvaneal steel with 1/4 inch fiberglass insulation

Air Filter:

Permanent, washable electrostatic, filter

Coil:

Staggered seamless copper tubing w/enhanced aluminum fins

Tested to 460 psig

Controls/Components

Factory installed components include:

Relays and connections for condensing unit and power supply
3/4" LCD display screen
Automatic/Manual Fan Control
Indoor Coil Freeze Protection
Anti-Short Cycle Compressor Protection
Fan Purge - Fan remains on for 60 sec. after heat/cool is dropped for maximum efficiency

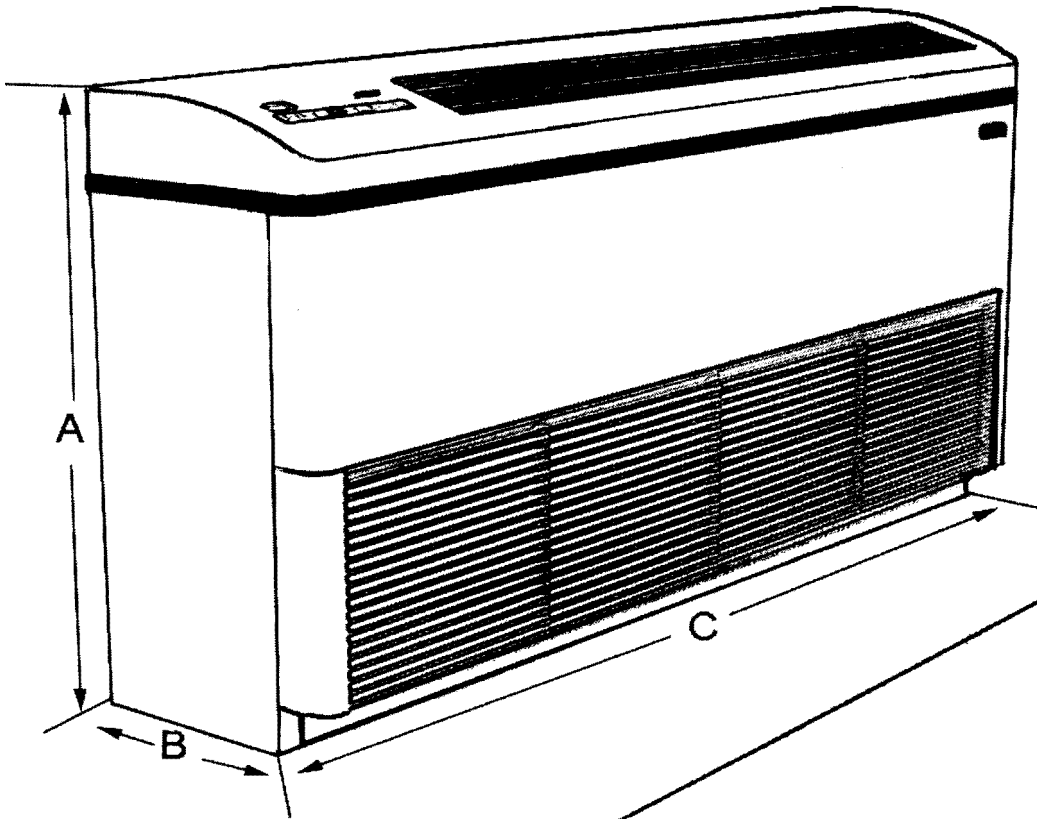
System Options

Infrared hand held remote control
Hydronic heatw/sweat connections
ETL approved electric heat w/safety controls
Condensate Pump (MCP field installed)

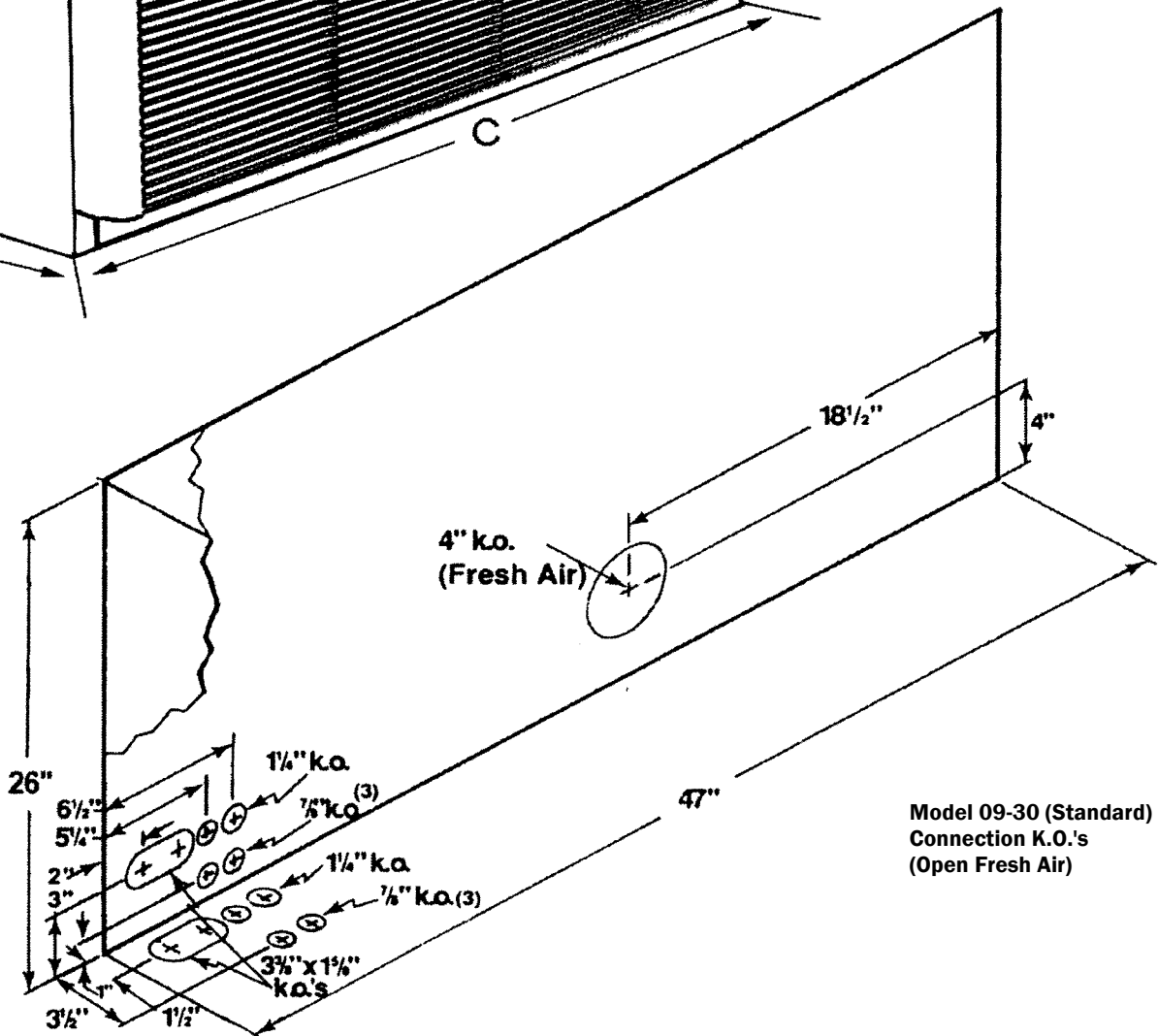
The Ductless Split Systems of Choice

Comfort-Cure
by **AITONS'**

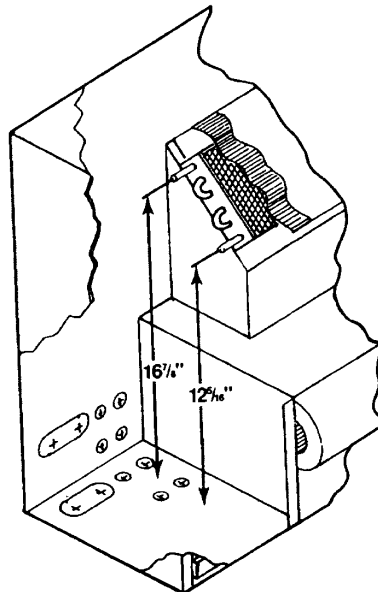
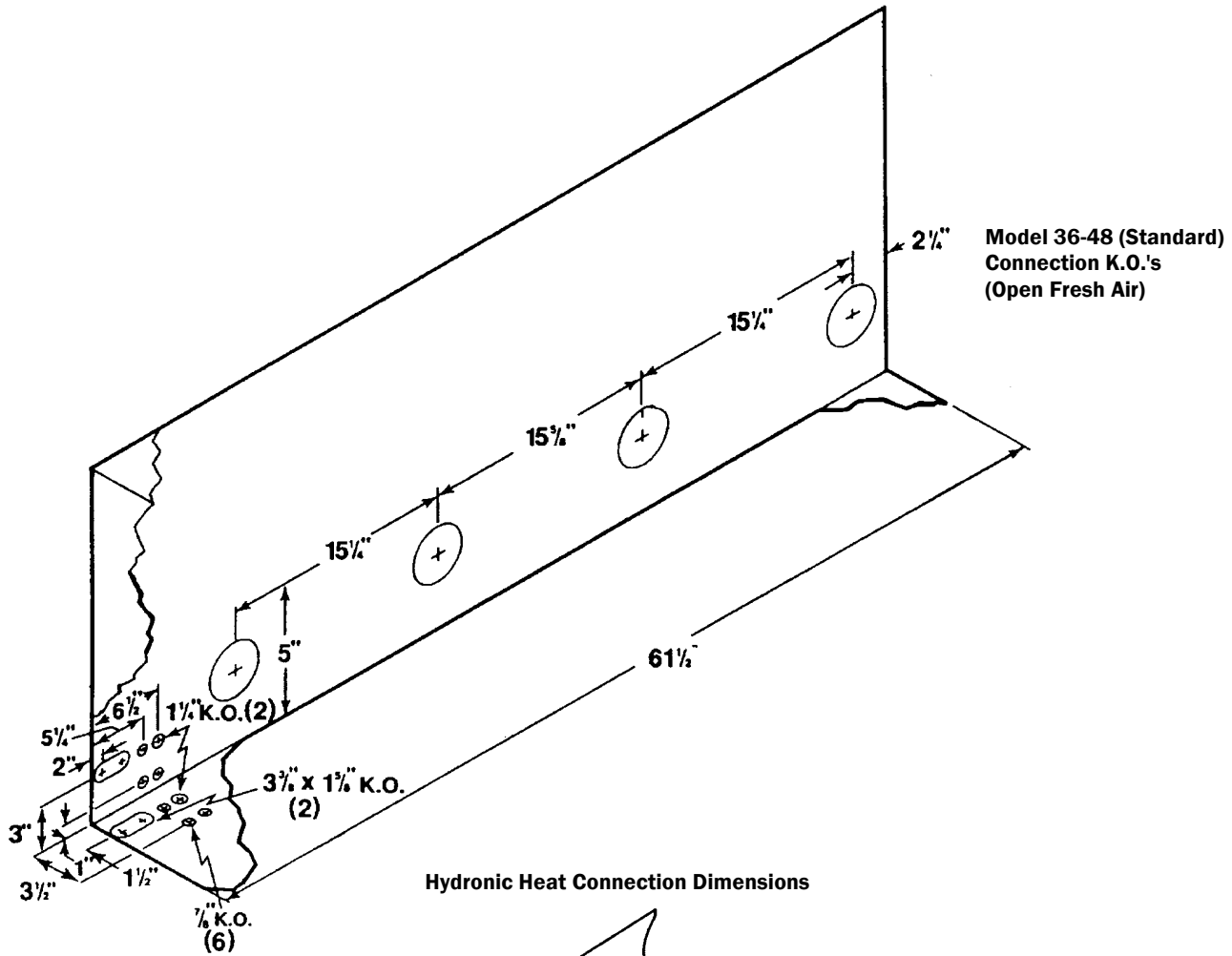
FMHB
Dimensions and Specifications



MODEL	A	B	C
09 - 30	26.0"	10.5"	47.0"
36 - 48	26.0"	10.5"	61.5"



Model 09-30 (Standard)
Connection K.O.'s
(Open Fresh Air)





FMHB

Dimensions and Specifications

FMHB Connection Specifications

FMHB MODEL	REFRIGERANT LINE SIZE (LIQUID)	REFRIGERANT LINE SIZE (SUCTION)	DRAIN HOSE
09	1/4" O.D.	1/2" O.D.	1/2" I.D.
12	1/4" O.D.	1/2" O.D.	1/2" I.D.
15	1/4" O.D.	1/2" O.D.	1/2" I.D.
18	3/8" O.D.	5/8" O.D.	5/8" I.D.
24	3/8" O.D.	3/4" O.D.	5/8" I.D.
30	3/8" O.D.	3/4" O.D.	5/8" I.D.
36	3/8" O.D.	7/8" O.D.	5/8" I.D.
42	3/8" O.D.	7/8" O.D.	5/8" I.D.
48	3/8" O.D.	7/8" O.D.	5/8" I.D.

Discharge Air Speed & Throw

FMHB MODEL	CFM LOW/HIGH	COIL	FPM	THROW /FT.
09, 12, 15	350/375	Dry	800	12.4
18, 24, 30	480/700	Dry	1,500	18.6
36, 42, 48	800/1,000	Dry	1,500	19.0

Hydronic Heat Specifications

FMHB MODEL	EWT ° F	BTU/h	GPM	CFM
09, 12, 15	180	24,300	2.0	440
09, 12, 15	140	18,400	2.0	440
18, 24, 30	180	41,500	3.5	725
18, 24, 30	140	26,200	3.5	725
36, 42, 48	180	62,400	6.0	1200
36, 42, 48	140	39,500	6.0	1200

Electrical Specifications:

FMHB MODEL	VOLTAGE/HERTZ PHASE	FAN FLA	MIN AMPACITY	MAX FUSE
09/12/15	208-230/60/1	.60	.80	15
18/24	208-230/60/1	.80	1.00	15
30	208-230/60/1	1.1	1.4	15
36/42/48	208-230/60/1	1.1/1.1	2.5	15

*If electric heat is installed use ampacity/max fuse ratings from heater options table.

Electric Heat Specifications

FMHB MODEL	VOLTAGE	KW	HEATER AMPS	TOTAL AMPS	MIN CIR AMPS	MAX FUSE
09, 12, 15	230	3	13.1	13.7	17.1	20
18, 24	230	5	21.7	22.5	28.2	30
30	230	5	21.7	22.8	28.6	30
36, 42, 48	230	7	30.4	32.7	40.6	50

Sound Levels:

MODEL	DBA
09, 12	48.6
15	56.0
18	57.2
24, 30	60.6
36, 42, 48	63.2

Shipping Weights:

MODEL	SHIPPING WT. (LBS.)
09, 12, 15	85
18, 24	115
30	120
36, 42	155
48	160

AITONS' EQUIPMENT INC.
519-824-2911

www.aitons.com
www.comfort-aire.com
e-mail: info@aitons.com



DISTRIBUTED BY: